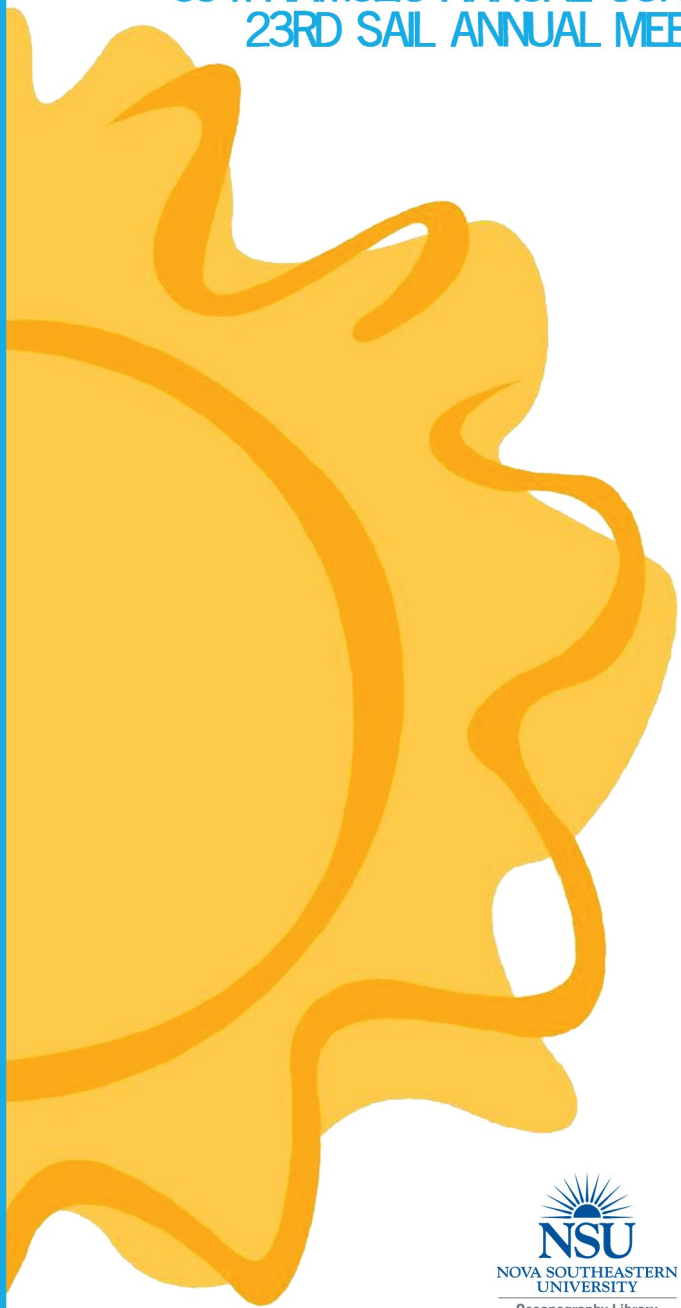


VISUALIZING A BRIGHT FUTURE

39TH IAMSLIC ANNUAL CONFERENCE  
23RD SAIL ANNUAL MEETING



OCTOBER 20 - 24, 2013  
DANIA BEACH, FLORIDA



SAIL -- an IAMSLIC Regional Group

# Conference Sponsors

IAMSLIC gratefully acknowledges the support of the following sponsors whose generous contributions have enabled us to support conference events and member participation.

## Manatee



## Dolphin



## Crocodile



## Sea Turtle



## Local Sponsor



# Program Contents

Welcome	3
Program Schedule	4-18
WiFi Access	4
Guin Auction	5
SAIL Meeting Agenda	10
Presentation and Panel Abstracts	19-28
Poster Abstracts	29-33
Attendees	34-37
IAMSLIC Business Parliamentary Procedures	38-39
First Business Meeting Agenda	40
Second Business Meeting Agenda	41
Draft Minutes for 2012 Business Meetings	42-47
NSU OC CoE Building Plan	48
NSU OC CoE 3rd Floor Map	49
Map of Conference Locations	Back cover



# VISUALIZING A BRIGHT FUTURE

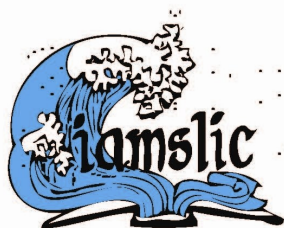
The board of trustees;  
George Hanbury, NSU president and CEO;  
faculty and staff members; students; and alumni  
of Nova Southeastern University

proudly support the



VISUALIZING A BRIGHT FUTURE

DANA BEACH, FLORIDA



Thank you for your continued efforts to build relationships  
with librarians from key aquatic and marine research  
organizations and universities around the world.



[www.nova.edu](http://www.nova.edu) • 800-541-6682

09-118-1310M



## Welcome

On behalf of the IAMS LIC Conference Planning committees, the IAMS LIC Executive Board and the SAIL Representative, we welcome you to the 39th IAMS LIC Annual Conference and the 23rd SAIL Annual Meeting.

## IAMS LIC Officers

### President (2012-2013)

Maria Kalentsits  
Fisheries & Aquaculture Library  
FAO  
fi-library@fao.org

### President Elect (2013-2014)

Sally Taylor  
University of British Columbia  
sally.taylor@ubc.ca

### President Elect (2014-2015)

Guillermina Cosulich  
Instituto Nacional de Investigacion  
y Desarrollo Pesquero (INIDEP)  
biblio@inidep.edu.ar

### Treasurer (2012-2014)

Lenora Oftedahl  
Columbia River Inter-Tribal Fish  
Commission  
iamslic.treasury@gmail.com

### Secretary (2011-2013)

Maureen Nolan  
University of Washington  
nolan@u.washington.edu

### Past President (2011-2012)

Amy Butros  
University of California San Diego  
abutros@ucsd.edu

## SAIL Representative

Joyce Shaw

## Conference Committees

### Local Arrangements

Jaime Goldman (host)  
Keri Baker (host)  
Angela Clark-Hughes  
Susan Stover

### Program

Sally Taylor (convenor)  
Mary-Clare Ame  
Dorothy Barr  
Guillermina Cosulich  
Elizabeth Fish  
Jaime Goldman  
Michelle Leonard  
Kristen Metzger  
Pauline Simpson

### Proceedings

Dorothy Barr

### Guin Silent Auction

Lenora Oftedahl

### Registration

Eleanor Uhlinger

### Sponsorship

Sally Taylor  
Jaime Goldman  
Maria Kalentsits

### Treasury

Jaime Goldman  
Lenora Oftedahl

### Website & Communications

Jaime Goldman  
Lenora Oftedahl  
Sally Taylor



## Saturday, October 19

- 1230 Meet in Hotel Lobby. Shuttle leaves 1245 sharp!
- 1300-1700 **Pre-conference workshop hosted by IAMS LIC and IODE**  
(lunch included for participants)  
5<sup>th</sup> Floor Boardroom, Center of Excellence for Coral Reef  
Ecosystems Research (CoE) at the Oceanographic  
Center, Nova Southeastern University.

### **Developing your role in the data management planning process**

*Presented by Jennifer Walton, Coordinator of Library Services,  
MBLWHOI Library, Marine Biological Laboratory | Woods Hole  
Oceanographic Institution, MA, USA*

This workshop will help librarians and information managers build the skills needed to work with researchers creating data management plans and fulfilling requirements for open data by funders, journals and institutions. We will examine the ways that librarians can support their users' data management plans including metadata assistance, obtaining a doi, evaluating repositories and getting credit for the re-use of their data. We will then look at using these skills to create a data management plan. We will discuss overcoming barriers as well as examining successful roles for librarians in this area.

#### **WiFi access**

There is free WiFi access at the NSU OC.

- Network = GUEST
- No login required
- Must accept terms on pop-up screen



#### **Computer access**

There are 10 computers in the Library on the 4th Floor. There are also facilities for printing /scanning/copying available in the library.



Sunday, October 20

0845-1400 Optional field trip to Flamingo Gardens  
Meet in Hotel Lobby. Bus leaves 0900 sharp!



1430-1630 First IAMSLIC Executive Board Meeting  
Hollywood Beach Marriott Hotel  
Atlantic Ballroom

1830-2100 **WELCOME RECEPTION**  
Hollywood Beach Marriott Hotel, Outdoor Terrace  
Sponsored by **Inter-Research**



### **Get ready for the Guin Auction!**

During the conference, we hold a silent auction to raise money for the Guin Fund which provides support to IAMSLIC members in developing countries. The Fund is a memorial to Marilyn Potts Guin (1944-1989) who was Head Librarian at the Hatfield Marine Science Center, Oregon State University (1976-1989) and a founding member of IAMSLIC.

### **Where is the Guin Auction?**

3rd Floor Seminar Room, Center of Excellence for Coral Reef Ecosystems Research, Oceanographic Center, Nova Southeastern University.

### **How can I participate in the Guin Auction?**

In addition to bidding, consider contributing an item or two from your institution or country. Some examples are: art, books, clothing, jewelry, tasty foods (that can pass customs inspection).

### **How do I bid at the Guin Auction?**

You will be given a secret name. Since it is a silent auction, you bid by writing your secret name and amount next to the item you want. The last chance to bid will be during the break on Wednesday. After the amounts are tallied, you can pay in cash or by check.

# Top quality publications from Inter-Research



Inter-Research (IR) is independently owned by a scientist and dedicated to serving the scientific community. Its interdisciplinary high-impact-factor journals are widely acclaimed. Articles in IR journals are rigorously peer-reviewed and copy-edited, and produced to a high technical standard. IR supports both 'Gold' and 'Green' Open Access



**Inter-Research Science Center**  
Nordbunte 23, 21385 Oldendorf/Luhe, Germany  
Tel: (+49) (0)4132 7127; Fax: (+49) (0)4132 8883

Please visit us at  
[www.int-res.com](http://www.int-res.com)  
or email us at  
[ir@int-res.com](mailto:ir@int-res.com)





Monday, October 21

Today's events will be held at the Center of Excellence for Coral Reef Ecosystems Research (CoE), Oceanographic Center, NSU.

- 0800-0830 Meet in Hotel Lobby. Shuttles leave 0815, 0830, 0845.
- 0830-0900 Registration, Speaker set-up (3rd Floor Auditorium)
- 0900-0945 Conference Welcome
- ◇ Jaime Goldman, IAMS LIC Conference Host
  - ◇ Lydia Acosta, Vice President for Information Services and University Librarian, NSU
  - ◇ Richard Dodge, Professor and Dean, NSU Oceanographic Center & Executive Director, National Coral Reef Institute
  - ◇ Maria Kalentsits, IAMS LIC President
  - ◇ Sally Taylor, IAMS LIC Conference Convenor
- 0945-1030 **Invited Speaker:** The lion, the web, and the globe: web-based software development and data visualization / *Matthew Johnston, Research Scientist/Scientific Computer Programmer, NSU Oceanographic Center*
- 1030-1100 **Break (3rd Floor Collaboration Area)**

**SESSION 1: Embedded Librarianship (panel)**

**Moderator: Kristen Metzger, CSA Ocean Sciences, Inc., FL, USA**

1100-1230 Embedded librarianship in environmental consulting; and the "good news" about the Deepwater Horizon oil spill / *Kristen Metzger, CSA Ocean Sciences, Inc., FL, USA*

Communicating spill science: COAST at the Gulf Coast Research Laboratory (GCRL) / *Joyce Shaw, Jessica A. Kastler, University of Southern Mississippi, Gulf Coast Research Laboratory, MS, USA*



Monday, October 21

**SESSION 1: Embedded Librarianship (continued)**

Barracks-based library instruction for female STEM majors / *Elizabeth Connor, The Citadel, Daniel Library, SC, USA*

Embedded online library support in online courses at Marine Institute / *Catherine Lawton, Memorial University of Newfoundland, Marine Institute, Dr. C.R. Barrett Library, Canada*

1230-1330

**Lunch (2nd Floor Terrace Café)**

Sponsored by **ProQuest**



**SESSION 2: Instruction**

**Moderator: Pauline Simpson, Central Caribbean Marine Institute & OceanDocs, Cayman Islands**

1330-1400 You too can be an Ocean Teacher / *Barbara Butler, Oregon Institute of Marine Biology, OR, USA*

1400-1415 Welcome to Joint GEMIM / *Linda Pikula, NOAA/ Miami Regional Library, FL, USA*

1415-1445 11,664 kilometers across the sea : bridging the student support gap to the Pacific Islands / *Beth Fuseler Avery, Cindy Batman, Yvonne Chandler, University of North Texas, TX, USA; Jane Barnwell, PREL – Pacific Resources for Education and Learning, HI, USA*

Monday, October 21

**SESSION 3: Posters**

**Moderator:** Marcel Brannemann, Alfred Wegener Institute for Polar and Marine Research, Germany

1445-1515 Brief (3-5 min) poster talks

1515-1600 **Break & Poster Viewing (2nd Floor Terrace Café)**

**SESSION 4: GIS & Data**

**Moderator:** Michelle Leonard, University of Florida, Marston Science Library, FL, USA

1600-1630 GIS data citation rates: is data being properly credited in lists of references? / *Kristen LaBonte, University of California Santa Barbara, CA, USA*

1630-1700 Developing and implementing data services at an undergraduate institution / *Jeanine Scaramozzino, California Polytechnic State University, CA, USA*

1700-1830 Joint GEMIM Meeting (5th Floor Boardroom)

1900-2100 SAIL Dinner and 23rd Annual Meeting  
Hollywood Beach Marriott Hotel  
Atlantic Ballroom



**SAIL -- an IAMS LIC Regional Group**

Monday, October 21



**SAIL -- an IAMS LIC Regional Group**

## **SAIL Dinner and 23rd Annual Meeting - Agenda**

Hollywood Beach Marriott Hotel, Atlantic Ballroom

### **1900-2000 SAIL Dinner**

- ◇ Dinner speaker - Catherine Lawton  
(Invitation to 2014 SAIL 24th Annual Meeting)

### **2000-2100 SAIL Business Meeting**

- ◇ Welcome
- ◇ Approval of past minutes
- ◇ Old business
- ◇ New business
- ◇ Other
- ◇ Meeting Close

Tuesday, October 22

The morning events will be held at the Center of Excellence for Coral Reef Ecosystems Research (CoE), Oceanographic Center, NSU, and the afternoon events at the International Game Fish Association (IGFA).

0815 All meet in Hotel Lobby. Bus leaves 0830 sharp!

0830-0900 Speaker set-up (3rd Floor Auditorium)

**SESSION 5: Partnerships & Collaboration**

**Moderator:** **Guillermina Cosulich, INIDEP (National Institute for Fisheries Research and Development), Argentina**

0900-0930 Collaboration for success: a new library/information commons at the Massachusetts Maritime Academy / *Susan Berteaux, Massachusetts Maritime Academy, MA, USA; Mark Freeman, Architect, Perry Dean Rogers | Partners Architects, MA, USA*

0930-1000 An insight into the contribution of partnerships and collaboration to NaFIRRI Library for the past 60 years / *Alice Endra, National Fisheries Resources Research Institute (NaFIRRI), Uganda*

1000-1030 Tapping into collective intelligence: making a big project work in a small library / *Rebecca Morin, California Academy of Sciences, CA, USA*

1030-1100 **Break (3rd Floor Collaboration Area)**



Tuesday, October 22

**SESSION 6: Outreach**

**Moderator:** Ruth Gustafson, University of California Davis, CA, USA

1100-1130 Bioluminescence: an adventure in learning and outreach / *Dorothy Barr, Harvard University, Ernst Mayr Library of the Museum of Comparative Zoology, MA, USA*

1130-1200 Creating a bright future: a library moves science learning forward / *Anne K. Moser, University of Wisconsin-Madison, Wisconsin's Water Library, WI, USA*

1200-1330

**Group Photo at NSU  
Transport to International Game Fish Association  
(IGFA) and Lunch**



Afternoon sponsored by **Cengage Learning**

1330-1400

**Dolphin Sponsor presentation:** Smithsonian: Understanding & sustaining a bio-diverse planet / *Gerald Sawchuk, Senior Director, New Products, Learning and Research Solutions, Cengage Learning, USA*

1400-1530

First IAMSLIC Business Meeting

1530-1730

IGFA exhibits and Library tours

1530-1630

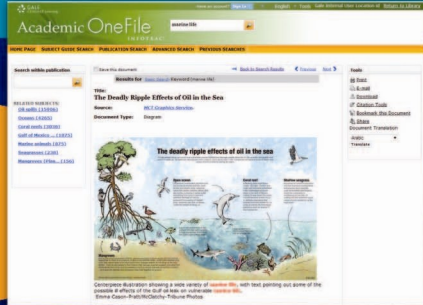
Second Executive Board Meeting



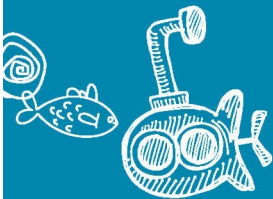
# Providing access to the research materials YOU NEED.



**Academic OneFile** —  
The premier resource for  
peer-reviewed, full-text  
journals and reference  
sources with more than  
18 Academic Journals.



Visit [www.gale.cengage.com](http://www.gale.cengage.com)  
for more info



Proud sponsor of IAMS LIC

©2014, Gale, Cengage Learning, is a registered trademark used herein under license.  
14M-RF0380 PM 9/13

**GALE**  
CENGAGE Learning®

Wednesday, October 23

Today's events will be held at the Center of Excellence for Coral Reef Ecosystems Research (CoE), Oceanographic Center, NSU.

0800-0830 Meet in Hotel Lobby. Shuttles leave 0815, 0830, 0845.

0830-0900 Speaker set-up (3rd Floor Auditorium)

0900-0930 **Invited Speaker:** Coral reef remote sensing / *Dr. Sam Purkis, NSU OC National Coral Reef Institute (NCRI)*

**SESSION 7: Research Dissemination**

**Moderator:** **Barbara Butler, Oregon Institute of Marine Biology, OR, USA**

0930-1000 Distribution, use and visibility of SEAFDEC Aquaculture Department publications: initiatives of the library / *Stephen Alayon, Daryl L. Superio, Jesserylle G. de la Peña, Elvi S. Nemiz, Analyn J. Gersabalino, Agustina T. Mosquera, Southeast Asian Fisheries Development Center (SEAFDEC), Philippines*

1000-1030 Using OpenSource software for repository and library catalogue: the experience of some African marine libraries / *Arame Ndiaye Keita, Direction des Pêches Maritimes, Marine Information and Documentation Center, Senegal*

1030-1100 **Break (3rd Floor Collaboration Area)**  
**Last chance to bid at the GUIN AUCTION!**



Wednesday, October 23

**SESSION 8: Spotlight on Florida**

**Moderator: Elizabeth Fish, University of Miami, FL, USA**

1100-1130 What lies beneath: a special collections odyssey / *Angela Clark-Hughes, University of Miami, Rosenstiel School of Marine and Atmospheric Science Library, FL, USA*

1130-1200 Consolidating the record: accessing Florida's historical environmental records / *Gail Donovan, New College of Florida, Jane Bancroft Cook Library, FL, USA; Susan Stover, Mote Marine Laboratory, Arthur Vining Davis Library & Archive, FL, USA; Fred Lohrer, Archbold Biological Station, FL, USA*

1200-1230

**Dolphin Sponsor presentation:** *Matthias Seaman, Inter-Research, Germany*



1230-1400

**Lunch (2nd Floor Terrace Café)  
20-min tours of Coral Nursery**

Sponsored by **Nova Southeastern University**



Wednesday, October 23

**SESSION 9: Green Flash**

**Moderator: Kristen LaBonte, University of California Santa Barbara, CA, USA**

1400-1500 Brief (3-5 min) presentations on new technologies, services, resources, initiatives.

The Green Flash is the moment of green light that flashes just as the sun sets or rises over open water. The Green Flash in IAMSLIC are those brilliant moments of clarity or insight that occur. They are brief discussions about new discoveries or moments of brilliance in our libraries. Let *Kristen LaBonte* know if you have something to share!

**CONFERENCE BANQUET**

Departing from Hollywood Beach Marriot to Hyatt Regency Pier 66\*:

- 1555 Group 1 walk 0.7 m south to water taxi stop at Giorgio's
- 1600 Group 2 board shuttle to water taxi stop at Giorgio's - shuttle departs at 1610 sharp!
- 1630 Groups 1 & 2 depart for Hyatt Regency Pier 66 on water taxi
- 1630 Group 3 board shuttle to Hyatt Regency Pier 66 (no water taxi) - shuttle leaves at 1645 sharp!
- 1730 -1830 Reception at Windows on the Green at the Hyatt
- 1830 -2130 Dinner & Dancing at the Pier Top Restaurant at the Hyatt

Departing from Hyatt Regency Pier 66 to Hollywood Beach Marriot:

- 2130 Groups 1 & 2 depart on water taxi
- 2130 Group 3 depart on shuttle (no water taxi)

\*Please see map on back cover for locations and addresses.

Thursday, October 24, 2013

Today's events will be held at the Center of Excellence for Coral Reef Ecosystems Research (CoE), Oceanographic Center, NSU.

0800-0830 Meet in Hotel Lobby. Shuttles leave 0815, 0830, 0845.

0830-0900 Speaker set-up (3rd Floor Auditorium)

**SESSION 10: Library Consolidations (panel)**

**Moderator:** Maureen Nolan, University of Washington, WA, USA

0900-1000 Thriving after surviving library consolidations / *Sally Taylor, University of British Columbia, Canada; Amy Butros, University of California San Diego, CA, USA; Maureen Nolan, University of Washington, WA, USA*

**SESSION 11: Aquatic Commons**

**Moderator:** Joan Parker, MLML/MBARI Research Library, CA, USA

1000-1030 Aquatic Commons update / *Joan Parker, MLML/MBARI Research Library, CA, USA*

1030-1100 **Break (3rd Floor Collaboration Area)**

1100-1200 Second IAMS LIC Business Meeting

1200-1220 Invitation to 40th IAMS LIC Conference in New Caledonia / *Mary-Clare Ame, Secretariat of the Pacific Community (SPC), Noumea Library, New Caledonia*

1220-1230 Conference closure

1230-1600 Aquatic Commons Work Party  
Lunch for participants (2nd Floor Terrace Café)  
Work in Forman Building (2nd Floor Computer Lab)



**Friday, October 25, 2013**

0845-1930      Optional field trip to Billie Swamp Safari  
Meet in Hotel Lobby. Bus leaves 0900 sharp!

**What to wear**

- ◇ Comfortable clothing (you may prefer closed-toed shoes but not required)

**What to pack**

- ◇ Sunscreen
- ◇ Bug spray
- ◇ Money for lunch (not included) and souvenirs
- ◇ Camera
- ◇ Sunglasses
- ◇ Sense of adventure!

**What to expect**

- ◇ Guided tour of the Big Cypress wetlands on a Swamp Buggy.
- ◇ Exotic wildlife such as ostriches, water buffalo, bison, deer and more. Perhaps spot a lurking Florida Panther or Black Bear.
- ◇ Learn about the Florida Seminole's culture at an Indian camp in the hammock and how plants were used for survival long ago.
- ◇ Airboat ride along the Florida waterways to see alligators and birds in their natural environment.
- ◇ Back on land take a seat to enjoy the Alligator and Snake Show and the Swamp Critter Show.



## Presentation and Panel Abstracts

**ALAYON, Stephen**  
**SUPERIO, Daryl L.**  
**DE LA PEÑA, Jesserylle G.**  
**NEMIZ, Elvi S.**  
**GERSABALINO, Analyn J.**  
**MOSQUERA, Agustina T.**

*Southeast Asian Fisheries Development Center (SEAFDEC), Philippines*

### **DISTRIBUTION, USE AND VISIBILITY OF SEAFDEC AQUACULTURE DEPARTMENT PUBLICATIONS: INITIATIVES OF THE LIBRARY**

The Southeast Asian Fisheries Development Center (SEAFDEC) is a regional treaty organization established in 1967 to promote fisheries development in the region. The Aquaculture Department (AQD), based in the Philippines, is mandated to conduct scientific research to generate aquaculture technologies relevant and appropriate for the region; develop human resources; and produce, disseminate and exchange information on aquaculture. In 2009, the Library and Data Banking Services Section identified its information dissemination and services target: to improve accessibility to archived and updated information produced by SEAFDEC/AQD and to increase its visibility. The library has established an exchange program and resource sharing agreements with various universities and institutions in the Philippines, Japan, Southeast Asia and other countries outside the region. It also developed SEAFDEC/AQD Institutional Repository (SAIR), where one can download scholarly work of the Department. The library is a member of the International Association of Aquatic and Marine Science Libraries and Information Centers (IAMS LIC). In 2012, it joined IAMS LIC Z39.50 Distributed Library and currently the only Asian library included in the Z39.50 Broadcast Search of Catalogs. This paper discusses the experiences of SEAFDEC/AQD Library in its document delivery, resource sharing and interlibrary loan activities, and also describes how the library adopted recent technologies to enable scientists, students and the general public to access and make use of aquatic and marine science information. Decision-making based on evidence and statistics, and the strategies and innovations made by the library, will be described. The uses of social media, email and IR have been found to be innovative and cost-effective ways to deliver information. The paper could be of value to other institutions and organizations considering similar collaborative efforts and international relation activities.

**EVERY, Beth Fuseler** *University of North Texas, TX, USA*

**BATMAN, Cindy** *University of North Texas, TX, USA*

**CHANDLER, Yvonne** *University of North Texas, TX, USA*

**BARNWELL, Jane** *Pacific Resources for Education and Learning, HI, USA*

### **11,664 KILOMETERS ACROSS THE SEA: BRIDGING THE STUDENT SUPPORT GAP TO THE PACIFIC ISLANDS**

The Library Education for the U.S.-Affiliated Pacific (LEAP) program was funded by an IMLS grant to provide a Master's level, distance program in library and information science in the U.S. Affiliated Pacific Islands. What differentiated this program from other University of North Texas (UNT) distance programs was the inclusion of mentors assigned to each student and a much larger role for the embedded librarians in the introductory workshop and throughout the two-year program. Library skills were integrated into the curriculum of the 10-day, on-site, total immersion program. This would be the only face-to-face contact students would have with faculty or librarians. We will discuss the numerous reference channels used, the librarian-in-the-classroom program, and the effects of culture on communication. Issues with long-term sustainability of mentoring relationships and access to resources will be also discussed.

**BARR, Dorothy** *Harvard University, Ernst Mayr Library of the Museum of Comparative Zoology, MA, USA*

### **BIOLUMINESCENCE: AN ADVENTURE IN LEARNING AND OUTREACH**

In spring 2012, the Ernst Mayr Library – Museum of Comparative Zoology received a grant to purchase and place three exhibit cases in the heavily traveled lobby of an adjacent science building. The purpose was to highlight the connections between library resources and research at Harvard. The second exhibit, Bioluminescence, was especially ambitious and involved multiple departments and University entities, raising and broadening the library's profile and enhancing recognition of its value. A LibGuide was also created to accompany the exhibit. Since bioluminescence is especially widespread in the oceans, it is of interest to IAMSLIC members, and the paper outlines the subject – what it is, how it works, what organisms use it and why. The paper also briefly recounts how valuable collaborations with faculty, staff and researchers were forged and enhanced in the process of creating the exhibit.

**BERTEAUX, Susan** *Massachusetts Maritime Academy, MA, USA*

**FREEMAN, Mark** *Perry Dean Rogers | Partners Architects, MA, USA*

### **COLLABORATION FOR SUCCESS: A NEW LIBRARY/INFORMATION COMMONS AT THE MASSACHUSETTS MARITIME ACADEMY**

Using the Massachusetts Maritime Academy (MMA) Library building project as a model, this presentation illustrates the collaborative process necessary to bring a project for a new library and learning commons from inception through design, to construction, with an emphasis on the institution's point of view.

**BUTLER, Barbara** *University of Oregon, Oregon Institute of Marine Biology, OR, USA*

### **YOU TOO CAN BE AN OCEAN TEACHER**

Do you have expertise to share with your colleagues via IODE's Ocean Teacher? I didn't think I had anything substantive to share, but was convinced otherwise. At the Oregon Institute of Marine Biology Library we used GoogleEarth and GeoCommons to create a spatially referenced bibliography without needing to host a GIS (Geographic Information System) program. At the request of GEMIM we documented this geo-referencing process in a video for IODE's Ocean Teacher. This paper chronicles the process by which we created the video and supporting documents. If I can do it in my part-time, one-person branch library, you can too.

**CLARK-HUGHES, Angela** *University of Miami, Rosenstiel School of Marine and Atmospheric Science Library, FL, USA*

### **WHAT LIES BENEATH: A SPECIAL COLLECTIONS ODYSSEY**

One of the challenges in transitioning into this new digital world has been in deciding when and where we enter; how much of our small specialized collection will make this transition, and how much of it will remain in print? When the Rosenstiel School of Marine and Atmospheric Science (RSMAS) Library embraced the myriad changes of the library world with open arms, we soon discovered that remnants of our not so distant past were amongst our collection and vital to our future. This talk will focus on how we uncovered reports, documents, images, and oral histories that chronicled the marine school's history, and how we endeavored to make this history accessible.



**CONNOR, Elizabeth** *The Citadel, Daniel Library, SC, USA*

### **BARRACKS-BASED LIBRARY INSTRUCTION FOR FEMALE STEM MAJORS** **[Panel on Embedded Librarianship]**

Four members of The Citadel's campus-based Faculty Assessment and Analysis Team competed to participate in ACRL's Assessment in Action (AiA) inaugural cohort, a 14-month learning community dedicated to proving the value of library services to student success. The Citadel team comprised of a librarian leader, the faculty chair of Chemistry, the faculty chair of Civil & Environmental Engineering, and a professor of Education, developed a project idea that takes library instruction to military barracks housing areas during mandatory Evening Study periods. The focus of the pilot study is to determine whether embedding a librarian in the cadets' regimented habitat will improve degree persistence, academic achievement, and graduation rates for female STEM majors. While female cadets comprise just fewer than 6% of the Corps of Cadets, more than 51% of female cadets choose to major in STEM disciplines. This paper will present preliminary results from using this approach and explain the tools and resources used to align library assessment efforts to college-wide strategic initiatives and to measure and prove the value of library resources, services, and expertise to student learning.

**DONOVAN, Gail** *New College of Florida, Jane Bancroft Cook Library, FL, USA*

**STOVER, Susan** *Mote Marine Laboratory, Arthur Vining Davis Library & Archive, FL, USA*

**LOHRER, Fred** *Archbold Biological Station, FL, USA*

### **CONSOLIDATING THE RECORD: ACCESSING FLORIDA'S HISTORICAL ENVIRONMENTAL RECORDS**

This presentation examines the history and records of environmental activity in Florida, mainly in the twentieth century, with specific attention to the southern part of the state. The discussion will cover the variety and types of materials and collections related to Florida's environmental history, where they are housed, and their accessibility. Entities highlighted include a sampling of academic institutions, government agencies, independent and nonprofit research institutions, as well as individual activists and activist organizations. We will touch



on notable collections such as the Reclaiming the Everglades Project in the Everglades Digital Library, and less known archival collections such as the New College of Florida's Environmental Studies Program, and the papers of the Archbold Biological Station in Venus, FL (formerly John Roebing's Red Hill Estate). The information in the talk is the foundation of a collaborative project to create an annotated list of environment-related materials and organizations in southern Florida that will be utilized by students, researchers, and the public. The compilation of this list/bibliography was motivated by the following statement in the 2013 report titled *Field Stations and Marine Laboratories of the Future: A Strategic Vision*, "The more than 500 FSMLs around the world, and the long-term records they maintain, make it possible to study environmental processes at multiple spatial and temporal scales."\* This enforces the fact that the materials held in libraries, archives and digital repositories are vital to the present and future global environmental challenges, and preservation of and access to the scholarly environmental record is critical. The valuable content they contain can provide a basis for people to manage their resources and maintain a sustainable environment.

\*Billick, Ian et al. 2013. *Field Stations and Marine Laboratories of the Future: A Strategic Vision*. National Association of Marine Laboratories, NAML and Organization of Biological Field Stations, OBFS. [iv] 54 p. <http://www.obfs.org/fsml-future>

**ENDRA, Alice** *National Fisheries Resources Research Institute (NaFIRRI), Uganda*

### **AN INSIGHT INTO THE CONTRIBUTION OF PARTNERSHIPS AND COLLABORATION TO NaFIRRI LIBRARY FOR THE PAST 60 YEARS**

The National Fisheries Resources Research Institute (NaFIRRI) is one of the Public Agricultural Research Institutes under National Agricultural Research Organisation (NARO). The National Fisheries Resources Research Institute Information and Data Centre has been in existence for over 50 years. With a limited budget, the Library has relied on outside support. Ever since its establishment it has been creating collaborations and partnerships, and they have made it what it is today. The Library has benefited from collaboration and linkages with local and international institutions, individuals and many more. The paper will discuss and assess the contributions made by collaborations and partnerships to the Library for the past 60 years, which have enabled it to continue to exist, grow and develop.



**KEITA, Arame Ndiaye** *Direction des Pêches Maritimes, Marine Information and Documentation Center, Senegal*

### **USING OPEN SOURCE SOFTWARE FOR REPOSITORY AND LIBRARY CATALOGUE: THE EXPERIENCE WITH SOME AFRICAN MARINE LIBRARIES**

To enhance preservation and sharing of e-resources, enable web publishing of local resources, and upgrade delivery of services, some African marine librarians use the AgriOceanDspace software to develop online library catalogues as well as institutional repositories. This paper will describe the objectives of this initiative, the process, the ongoing results and the challenges faced.

**LABONTE, Kristen** *University of California, Santa Barbara, CA, USA*

### **GIS DATA CITATION RATES: ARE DATA BEING PROPERLY CREDITED IN LISTS OF REFERENCES?**

Researchers in the field of Geographic Information Systems (GIS) use large data sets, many of which are combined with additional data sets to analyze and display information. Data relating to research is usually collected in the field and combined with layers of data from other sources. These data sets are often credited within the text of an academic paper, but are not reported in the list of references. Citation of data is important to acknowledge and validate the source, and to create ease of access for other users. This study will assess the rates of GIS data citation from the years 2012 and 2002 to illuminate trends in citation patterns.

**LAWTON, Catherine** *Memorial University of Newfoundland, Marine Institute, Dr. C.R. Barrett Library, Canada*

### **EMBEDDED ONLINE LIBRARY SUPPORT IN ONLINE COURSES AT MEMORIAL UNIVERSITY OF NEWFOUNDLAND'S MARINE INSTITUTE [Panel on Embedded Librarianship]**

The concept of Embedded Librarian is not a new one. It arose from a recognized need to support distance students. "Embeddedness" varies from one academic library to another ranging from a simple "help" button on a distance instruction page to librarians actually involved in teaching and marking within the course. At the Marine Institute the concept of "Embedded Library Support" was introduced as a pilot

project to give library support to the many new online courses being developed. The uniqueness of Embedded Library Support is that all library staff at Dr. C.R. Barrett Library at Marine Institute are involved in providing reference support. With this in mind a “role” was created in the learning management system called “library support.” The librarian and staff take turns monitoring the online courses that are being supported. While this project is still in a pilot stage, faculty and student reception has been positive and the effect on staff workload has been positive.

**METZGER, Kristen** *CSA Ocean Sciences, Inc., FL, USA*

**EMBEDDED LIBRARIANSHIP IN ENVIRONMENTAL CONSULTING; AND THE “GOOD NEWS” ABOUT THE DEEPWATER HORIZON OIL SPILL**  
**[Panel on Embedded Librarianship]**

As one of the two IAMS LIC members working in a for profit environment, I want to illustrate in this presentation the role of an embedded librarian in the corporate world, where you must deliver a visible contribution in a performance and measurement oriented environment. I am not there to provide instruction on how to find information – I’m to find it and deliver it – yesterday! I am truly embedded with the scientists, technicians and managers I serve – my office is in the center of the main building, while the library itself, containing enormous amounts of grey literature, is on the second floor of another building. Information services are provided from before a job is bid to the end point where the final printed product is provided to a client. I provide competitive intelligence and opportunity alerting services before the bidding process. Database searching, evaluation and synthesis of available literature, interlibrary loan and document delivery contribute to the reports written by the scientific staff members. Finally, I assist the document production team in verifying that all bibliographic data is accurate. I’m also involved with internal information architecture and responsible for current awareness. I’ll use the Deepwater Horizon oil spill to show how this event affected environmental consultants, oil companies, municipal, state and federal government agencies and my work as an embedded librarian.

**MORIN, Rebecca** *California Academy of Sciences, CA, USA*

### **TAPPING INTO COLLECTIVE INTELLIGENCE: MAKING A BIG PROJECT WORK IN A SMALL LIBRARY**

Information professionals of the 21st century are expected to engage in highly collaborative partnerships that transcend departmental, institutional, and geographic boundaries. While venues and service models have changed, expectations of core services often remain the same. Librarians and archivists are tasked with finding ways to innovate and provide new tools without compromising traditional core functions, and these demands come with small budgets and even smaller staff numbers. The California Academy of Sciences is facing some of these challenges with an IMLS National Leadership Grant titled Connecting Content: A Collaboration to Link Field Notes to Specimens and Published Literature. Through this project, Academy librarians and archivists have worked closely with in-house researchers, scientific visualization staff, and the local community, as well as five other institutions and the Biodiversity Heritage Library. In this paper, the project's Principal Investigator will share information about how this collaborative, user-centered effort came into being, the hoped-for end results, and lessons learned along the way.

**MOSER, Anne K.** *University of Wisconsin-Madison, Wisconsin's Water Library, WI, USA*

### **CREATING A BRIGHT FUTURE: A LIBRARY MOVES SCIENCE LEARNING FORWARD**

A key mission of Wisconsin's Water Library at the University of Wisconsin-Madison is educational outreach to state residents of all ages to heighten awareness of the Great Lakes and of Wisconsin's water resources. The library accomplishes this mission in many ways and at many venues. This presentation will highlight two successful ongoing projects where educational outreach is offered to under-represented minorities. In his books *Last Child in the Woods* and *The Nature Principle*, journalist Richard Louv has written extensively about how the preschool and the early elementary years offer a critical window to reach children with age-appropriate messages about ecosystems. This is especially important for children from disadvantaged households, where the opportunity or means to explore the natural world is often

limited. Libraries have a unique opportunity to reach this age group as they often play key roles in providing services to this age group. Over the past five years, the Water Library has used award-winning literature and science-based activities to introduce marine science concepts to preschoolers and early elementary students. The library has an ongoing relationship with the Head Start program in the Ho-Chunk Nation near Wisconsin Dells, one of the largest Native American communities in the state. Librarians also visit the Allied Drive Learning Center in Madison, Wisconsin located in a high poverty neighborhood with no nearby library. These ongoing collaborations have provided enriching experiences to children who otherwise would not be exposed to marine literacy.

**PARKER, Joan** *MLML/MBARI Research Library, CA, USA*

#### **AQUATIC COMMONS UPDATE**

Each year the Aquatic Commons Board presents an overview of the previous year's challenges and successes. In addition, the ACB will again use the conference venue as a means of capturing member feedback on short-term and long-term priorities for IAMS LIC's thematic digital repository.

**SCARAMOZZINO, Jeanine** *California Polytechnic State University, CA, USA*

#### **DEVELOPING AND IMPLEMENTING DATA SERVICES AT AN UNDERGRADUATE INSTITUTION**

Cal Poly is a primarily undergraduate, comprehensive polytechnic university with 18,000 students. The Cal Poly Data Services program currently supports faculty and students in dealing with data curation and data management, GIS, and scholarly communication. Whereas data services programs at most research universities focus on institutional data management, the program at Cal Poly focuses on data literacy through instruction and peer-to-peer reference. The development of a physical home for Data Services, the Data Studio, supports the virtual world of data literacy. Learn about the development and implementation of Cal Poly's Data Services program and the lessons learned by its staff that may help you to begin or improve your library's data services program.

**TAYLOR, Sally** *University of British Columbia, Canada*

**BUTROS, Amy** *University of California San Diego, CA, USA*

**NOLAN, Maureen** *University of Washington, WA, USA*

### **THRIVING AFTER SURVIVING LIBRARY CONSOLIDATIONS [Panel]**

In response to budgetary realities and enabled by the growth of online collections, there is a trend in academic institutions to consolidate branch libraries. Library consolidation is challenging but can present new opportunities. As academic librarians closely involved in the changes at our three institutions, we reflect on our experiences and share the challenges we faced, lessons learned, and successful outcomes. In this paper we describe the restructuring at three large academic libraries on the west coast of North America that resulted in library consolidations, new service models and reconfigured spaces to meet changing user needs.

In 2012-2013, the University of British Columbia consolidated the Science & Engineering branch library and two off campus hospital libraries into the existing Woodward Library, integrating not only collections and services but also separate teams.

In 2012, the University of California, San Diego consolidated the Scripps Institution of Oceanography Library into the Geisel Library and the Science & Engineering Library. Scripps Library was the fourth library to be consolidated/closed in 2011-2012. In summer 2013 the last four branch and discipline libraries, of the original nine, were consolidated leaving only one library in two buildings. A complete restructuring of the Library's departments and programs was implemented in 2012-2013 resulting in a new organizational structure, consolidated collections and services, and different jobs and reporting lines for most staff.

In 2009, the University of Washington consolidated three science branch libraries (Natural Sciences, Fisheries-Oceanography, and Chemistry) into the main (Suzzallo/Allen) library and adopted a new "reading room" service model for the Physics/Astronomy Library. As part of the consolidation, UW developed a new "Research Commons" in the real estate that was the Natural Sciences Library.

## Poster Abstracts

**CARLE, Daria O.** *University of Alaska Anchorage, Consortium Library, AK, USA*

**WADLEY, Victoria** *Australian Antarctic Division, Australian Government, Australia*

### ARCHIVING THE PROJECT MANAGEMENT INFORMATION OF THE CENSUS OF ANTARCTIC MARINE LIFE

The Census of Antarctic Marine Life (CAML), a key activity of the Scientific Committee on Antarctic Research and a major initiative of the recent International Polar Year, measured the distribution and abundance of life in the Southern Ocean around Antarctica to assess potential changes and develop new paradigms for biodiversity in the marine environment. Published CAML results can be tracked in traditional databases, and institutional repositories and data centers are storing the metadata and related datasets. However, another type of ‘metadata’ exists—the ‘grey literature’ produced during the development and ongoing activities of the CAML project itself that are not typically available because of lack of publication or a means of distribution. This poster outlines the steps taken to save CAML’s non-traditional information, a unique and informative contribution of intensive planning and international cooperation efforts that would have likely been lost when the project ended. By capturing and converting these miscellaneous documents to PDF and making them readily available, this valuable information has now been saved as metadata. The CAML Project Archive, available through NASA’s Global Change Master Database (<http://gcmd.nasa.gov/>) and maintained by the Australian Antarctic Division’s Data Centre (<http://data.aad.gov.au/>), includes information such as internal and annual reports; maps of voyage routes and sampling areas; sampling protocols; research synthesis and research plans; meeting agendas and minutes; and much more. The success achieved through archiving the CAML project documentation in a freely available repository also serves a model for organizing the gray literature of future research projects, particularly when international or multi-institutional collaborative efforts are involved.

**DONOVAN, Gail** *New College of Florida, Jane Bancroft Cook Library, FL, USA*

**STOVER, Susan** *Mote Marine Laboratory, Arthur Vining Davis Library & Archive, FL, USA*

### **EXPANDING THE CONCEPT OF "LIBRARY:" STRENGTHENING THE ACADEMIC AND RESEARCH LIBRARIANS' ROLE**

The function of the library is evolving and librarians have enhanced their skills and expanded their roles to help strengthen the library's purpose and value. As part of this change many academic and research librarians have become data curators or librarian archivists. They are involved in the creation and curation of e-repositories for their institutions' research data and scholarly publications. Others have incorporated and promoted the idea that the library is also an archive for historical institutional papers and various unique collections. These librarian archivists or special collection librarians provide access to primary source documents along with their historical context, as well as related secondary documents from digital and print collections. Even though libraries, archives, and digital repositories have common goals to acquire, organize, preserve and provide access to their materials, their policies on access, use by the public, standard practices, cataloging, and even vocabularies are different. This poster will compare and contrast the software, tasks and terminology used by librarians, archivists and data curators to organize, preserve and present the historic, ecological and scientific materials in an academic and a research library.

**FONSECA ARCAJA, Enma Luisa** *Centro de Investigaciones Pesqueras (CIP), Cuba*

### **THE VISIBILITY OF THE SCIENTIFIC PRODUCTION OF THE FISHERIES RESEARCH CENTER (CIP) AND OTHER CUBAN MARINE INSTITUTIONS IN THE E-REPOSITORY OCEANDocs: OPPORTUNITIES AND CHALLENGES**

This poster presents the main results of the participation of marine and aquatic science libraries in Cuba in a regional digital repository with the first contributions to the Project OceanDocs IOC / IODE / UNESCO (<http://www.oceandocs.org/>) in 2006. It shows the progress made by



the Fisheries Research Center (CIP), Institute of Oceanology (IdO), the National Aquarium of Cuba, Center for Marine Research, Marine Bioproducts Center, and Research Institute of Food Industry to provide access to magazines, scientific papers, theses, national and international brochures, books, newsletters and other documents. The poster explains the procedures proposed by the Fisheries Research Center (CIP) aimed at increasing the visibility of local scientific research, and harnessing the power of OceanDocs. These also contribute to the performance and evaluation of the researchers at CIP, the coordinating entity and representative of Cuban libraries for this project, which is responsible for collecting, reviewing and validating all documents and data to ensure compliance with the terms of the reference and copyright policy established by OceanDocs. We show the value of the joint work between libraries of the marine scientific community to strengthen the Open Access movement with the use of digital tools, courses, training, workshops and conferences in this field, which is necessary to increase awareness of the aquatic and marine scientific research in the region.

**HARKER, Karen** *University of North Texas, TX, USA*

**AVERY, Beth Fuseler** *University of North Texas, TX, USA*

### PROVING OUR WORTH

Over the past several years we have established a procedure to give input into the accreditation process that, in addition to demonstrating the ways in which the library supports the educational process, is also used to build a collection development policy that addresses the strengths and weaknesses in specific subject areas. We will present the ways in which we gather and present data, and build a conspectus for collection development.

**LEZCANO LOPEZ, Yuriem** *Centre for Marine Research, University of Havana, Cuba*

**SANCHEZ VIGNAU, Dr. Susana Barbarian** *Centre for Marine Research, University of Havana, Cuba*

### APPROACHES TO THE STUDY OF THE MARINE SCIENCES DOMAIN THROUGH THE SCIENTIFIC RESEARCH PUBLISHED IN THE CUBAN JOURNAL OF MARINE RESEARCH

The scientific research published in the *Journal of Marine Research* (RIM) is analyzed for the period 2003-2010 for bibliographic reference, production, authorship, referenced sources, and subject terms. It concludes that domain analysis constitutes a new approach in the discipline of Information Science. The RIM database constituted the primary source of information for obtaining a closer look into the behavior of the proposed bibliometric indicators, which account for 14 fields, some of which had limitations due to the lack of uniformity of the bibliographical references. RIM showed a stable regularity in the issue of the numbers and declared volumes. A relatively small group of authors contributes a substantial number of the works. The analysis of the collaborations between authors reflects the interdisciplinary teamwork. Among the institutions contributing to RIM, most are in the domain of marine sciences, especially marine ecology, system analysis, and aquaculture, corresponding to the topics covered by RIM and some of the research priorities for the country. The most mentioned papers are classics of scientific literature on marine sciences, and most of their authors belong to prestigious US institutions. The most mentioned sources were journals, followed by books and monographs. The most mentioned journal was RIM, indicating that it serves as a reference for authors from CIM (Centre for Marine Research), who contribute 58% of the analyzed publications, and other Cuban institutions. This together with editorial approaches that favor Cuban authors (according to Perez Gomez et al. 1997) tends to devalue the publication and affects its visibility and inclusion in databases and international assessment systems. Hence, placing RIM in databases, directories, catalogs and open access repositories would increase the visibility of authors in the Marine sciences in Cuba.

**SHAW, Joyce M.** *University of Southern Mississippi, Gulf Coast Research Laboratory, MS, USA*

**KASTLER, Jessica A.** *University of Southern Mississippi, Gulf Coast Research Laboratory, MS, USA*

**COMMUNICATING SPILL SCIENCE: COAST AT THE GULF COAST RESEARCH LABORATORY (GCRL) [Panel on Embedded Librarianship]**

COAST (Community Outreach for Accurate Science Translation) is a project developed by the Gulf Coast Research Laboratory's Marine

Education Center to serve as the public outreach component of an EPA grant “Uptake and Effects of Dispersed Oil Droplets and Emulsified Oil by Estuarine Crustaceans in the Gulf of Mexico” shared by Skidaway Institute of Oceanography, GCRL, and Institute of Marine and Environmental Technology at University of Maryland Center for Environmental Science. The mission of the COAST team is to enhance public understanding of the effects of the Deepwater Horizon 2010 oil spill and to build trust in the process of science by engaging a group of citizens to work with the researchers. Team members learn the biological processes which govern how and where spill and clean up products make their way into the food chain as they learn the steps involved in conducting the research and work with researchers to complete some of those steps. The team is drawn from the oil affected area along the Mississippi Gulf Coast and includes commercial and recreational fishers, community volunteers, staff members from state and federal agencies, college students, master naturalists, and teachers. There are also two GCRL “Advisors,” the website developer and the head librarian. This is the first example of an “embedded librarian” at GCRL.

## Attendees

ALAYON, Stephen – Southeast Asian Fisheries Development Center (SEAFDEC), Aquaculture Department, Tigbauan, Philippines.

[sbalayon@seafdec.org.ph](mailto:sbalayon@seafdec.org.ph)

ALDERMAN, Pamela – Florida Atlantic University, Harbor Branch Oceanographic Institute, Fort Pierce, FL, USA. [palderm1@fau.edu](mailto:palderm1@fau.edu)

AME, Mary-Clare – Secretariat of the Pacific Community (SPC), Noumea, New Caledonia. [marieca@spc.int](mailto:marieca@spc.int)

ANDERSON, Kristen – University of Hawaii at Manoa, Honolulu, HI, USA. [krisa@hawaii.edu](mailto:krisa@hawaii.edu)

EVERY, Beth – University of North Texas, Willis Library, Denton, TX, USA. [beth.avery@unt.edu](mailto:beth.avery@unt.edu)

BACA, David – Texas A & M University at Galveston, Jack K. Williams Library, Galveston, TX, USA. [bacad@tamug.edu](mailto:bacad@tamug.edu)

BAKER, Keri – Nova Southeastern University, Oceanography Library, Dania Beach, FL, USA. [kbaker1@nova.edu](mailto:kbaker1@nova.edu)

BARR, Dorothy – Harvard University, Ernst Mayr Library of the Museum of Comparative Zoology, Cambridge, MA, USA. [dbarr@oeb.harvard.edu](mailto:dbarr@oeb.harvard.edu)

BERNDT-STEWART, Torsten – Guest of Ian Stewart

BERTEAUX, Susan – Massachusetts Maritime Academy, Buzzards Bay, MA, USA. [sberteaux@maritime.edu](mailto:sberteaux@maritime.edu)

BOYETT, Jan – Florida Fish & Wildlife Research Institute, St. Petersburg, FL, USA. [Jan.Boyett@MyFWC.com](mailto:Jan.Boyett@MyFWC.com)

BRANNEMANN, Marcel – Alfred Wegener Institute for Polar and Marine Research, Bibliothek, Bremerhaven, Germany.

[Marcel.Brannemann@awi.de](mailto:Marcel.Brannemann@awi.de)

BUTLER, Barb – Oregon Institute of Marine Biology, University of Oregon, Charleston, OR, USA. [butler@uoregon.edu](mailto:butler@uoregon.edu)

BUTROS, Amy – University of California San Diego, San Diego, CA, USA. [abutros@ucsd.edu](mailto:abutros@ucsd.edu)

CARLE, Daria – University of Alaska Anchorage, Consortium Library, Anchorage, AK, USA. [afdoc@uaa.alaska.edu](mailto:afdoc@uaa.alaska.edu)

CLARK-HUGHES, Angela – University of Miami, Rosenstiel School of Marine and Atmospheric Science Library, Miami, FL, USA.

[aclark@rsmas.miami.edu](mailto:aclark@rsmas.miami.edu)

CONNOR, Elizabeth – The Citadel, Charleston, SC, USA.

[elizabeth.connor@citadel.edu](mailto:elizabeth.connor@citadel.edu)

COSULICH, Guillermina – El Instituto Nacional de Investigación y Desarrollo Pesquero (INIDEP), Mar del Plata, Argentina.

[gcosulich@inidep.edu.ar](mailto:gcosulich@inidep.edu.ar)

CRAMPON, Jean – University of Southern California, Science & Engineering Library, Los Angeles, CA, USA. [crampon@usc.edu](mailto:crampon@usc.edu)

CROY-VANWELY, Marcia – Fisheries & Oceans Canada, Pacific Region Library, Vancouver.

CUBELLIS, Michael – Guest of Susan Berteaux

DONOVAN, Gail – New College of Florida, Jane Bancroft Cook Library, Sarasota, FL, USA. [gdonovan@ncf.edu](mailto:gdonovan@ncf.edu)

ENDRA, Alice – National Fisheries Resources Research Institute (NaFIRRI), Uganda

FISH, Elizabeth – University of Miami, Rosenstiel School of Marine and Atmospheric Science Library, Miami, FL, USA. [efish@rsmas.miami.edu](mailto:efish@rsmas.miami.edu)

FORRESTER, Amy – ProQuest, Bethesda, MD, USA.

[amy.forrester@proquest.com](mailto:amy.forrester@proquest.com)

GOLDMAN, Jaime – Nova Southeastern University, Oceanography Library, Dania Beach, FL, USA. [hjaime@nova.edu](mailto:hjaime@nova.edu)

GUSTAFSON, Ruth – University of California Davis, Shields Library, Davis, CA, USA. [ragustafson@ucdavis.edu](mailto:ragustafson@ucdavis.edu)

HAAS, Stephanie—University of Florida, Emeritus, Gainesville, FL, USA.

HEIL, Kathleen –University of Maryland, CES, Chesapeake Biological Laboratory, Solomons, MD, USA. [heil@cbl.umces.edu](mailto:heil@cbl.umces.edu)

KALENTSITS, Maria – Food and Agriculture Organization of the United Nations (FAO), Fisheries and Aquaculture Branch Library, Rome, Italy.

[Maria.Kalentsits@fao.org](mailto:Maria.Kalentsits@fao.org)

KEITA, Arame Ndiaye – Direction des Pêches Maritimes, Marine Information and Documentation Center, Senegal.

[arame.keita@gmail.com](mailto:arame.keita@gmail.com)

LABONTE, Kristen – University of California Santa Barbara, CA, USA.

[klabonte@library.ucsb.edu](mailto:klabonte@library.ucsb.edu)

LAWTON, Catherine – Memorial University of Newfoundland, Marine Institute, St. John's, NL, Canada. [catherine.lawton@mi.mun.ca](mailto:catherine.lawton@mi.mun.ca)



LEONARD, Michelle – University of Florida, Marston Science Library, Gainesville, FL, USA. [mleonard@uflib.ufl.edu](mailto:mleonard@uflib.ufl.edu)

LUST, Heike – Vlaams Instituut voor de Zee, Oostende, Belgium. [heike.lust@vliz.be](mailto:heike.lust@vliz.be)

MAXSON, Kathleen – Nova Southeastern University, Dania Beach, FL, USA.

MCCLUSKY, Duncan – University of Georgia, Tifton Campus Library, Tifton, GA, USA. [mcclusky@uga.edu](mailto:mcclusky@uga.edu)

METZGER, Kristen – CSA Ocean Sciences Inc., Stuart, FL, USA. [kmetzger@conshelf.com](mailto:kmetzger@conshelf.com)

MORIN, Becky – California Academy of Sciences, San Francisco, CA, USA. [rmorin@calacademy.org](mailto:rmorin@calacademy.org)

MOSER, Anne – University of Wisconsin-Madison, UW's Water Library, Madison, WI, USA. [akmoser@aqu.wisc.edu](mailto:akmoser@aqu.wisc.edu)

NOLAN, Maureen – University of Washington, Suzzallo Library / Friday Harbor Library, Seattle, WA, USA. [nolan@u.washington.edu](mailto:nolan@u.washington.edu)

OFTEDAHL, Lenora – Columbia River Inter-Tribal Fish Commission, Portland, OR, USA. [oftl@critfc.org](mailto:oftl@critfc.org)

PARKER, Joan – Moss Landing Marine Laboratory/Monterey Bay Aquarium Research Institute Library, Moss Landing, CA, USA. [joan@mbari.org](mailto:joan@mbari.org)

PIKULA, Linda – NOAA/Miami Regional Library, Miami, FL, USA. [linda.pikula@noaa.gov](mailto:linda.pikula@noaa.gov)

PISSIERSSENS, Peter – UNESCO/IOC IODE, Paris, France. [p.pissierssens@unesco.org](mailto:p.pissierssens@unesco.org)

PUTINSKI, John – Guest of Pamela Alderman, Florida Atlantic University, Harbor Branch Oceanographic Institute, Fort Pierce, FL, USA.

RAYMOND, Lisa – Woods Hole Oceanographic Institution, Woods Hole, MA, USA. [lraymond@whoi.edu](mailto:lraymond@whoi.edu)

SAWCHUK, Gerry – Cengage Learning, Farmington Hills, MI, USA. [gerald.sawchuk@cengage.com](mailto:gerald.sawchuk@cengage.com)

SCARAMOZZINO, Jeanine – California Polytechnic State University, San Luis Obispo, CA, USA. [jscaramo@calpoly.edu](mailto:jscaramo@calpoly.edu)

SEAMAN, Matthias – Inter-Research Science Center, Oldendorf/Luhe, Germany. [matthias@int-res.com](mailto:matthias@int-res.com)

SHAW, Joyce – Gulf Coast Research Laboratory, Gunter Library. Ocean Springs, MS, USA. [joyce.shaw@usm.edu](mailto:joyce.shaw@usm.edu)

SHEPHARD, Pamela – Bigelow Laboratory for Ocean Sciences, Boothbay, ME, USA. [library@bigelow.org](mailto:library@bigelow.org)

SIMPSON, Pauline – Central Caribbean Marine Institute & OceanDocs, Grand Cayman, Cayman Islands.

STEWART, Ian – Inter-Research Science Center, Oldendorf/Luhe, Germany. [ian.stewart@int-res.com](mailto:ian.stewart@int-res.com)

STOVER, Susan – Mote Marine Laboratory, Arthur Vining Davis Library & Archive, FL, USA. [library@mote.org](mailto:library@mote.org)

TAYLOR, Sally – University of British Columbia, Woodward Library, Vancouver, BC, Canada. [sally.taylor@ubc.ca](mailto:sally.taylor@ubc.ca)

TURNER, Llewellyn Brian – IODE, Guest of Peter Pissierssens

VANWELY, Lex – Guest of Marcia Croy-Vanwely

WALTON, Jennifer – Marine Biological Laboratory, MBLWHOI Library, Woods Hole, MA, USA. [jwalton@mbl.edu](mailto:jwalton@mbl.edu)

WEBSTER, Janet – Oregon State University, Hatfield Marine Science Center, Guin Library, Newport, OR, USA. [janet.webster@oregonstate.edu](mailto:janet.webster@oregonstate.edu)

WIBLE, Joseph – Hopkins Marine Station, Harold A. Miller Library, Pacific Grove, CA, USA. [wible@stanford.edu](mailto:wible@stanford.edu)

WIBLEY, Helen – Food and Agriculture Organization of the United Nations (FAO), Rome, Italy. [helen.wibley@fao.org](mailto:helen.wibley@fao.org)

WINIARZ, Elizabeth – University of Massachusetts Dartmouth, North Dartmouth, MA, USA. [ewiniarz@umassd.edu](mailto:ewiniarz@umassd.edu)

## IAMSLIC Business Meetings

### Basic Parliamentary Procedures

1. Parliamentary procedure exists to facilitate the transaction of business and to promote cooperation and harmony.
2. All members have equal rights, privileges, and obligations. The majority has the right to decide. The minority has rights which must be protected.
3. A quorum must be present for the group to act.
4. Full and free discussion of every motion considered is a basic right.
5. Only one question at a time can be considered at any given time.
6. Members have the right to know at all times what the immediately pending question is, and to have it restated before a vote is taken.
7. No member can speak until recognized by the chair.
8. No one can speak a second time on the same question as long as another wants to speak a first time.
9. The chair should be strictly impartial.

### Motions or Resolutions

#### Handling a motion:

1. A member makes a motion. (Lengthy motions or resolutions should be written out and given to the President before the business meeting. Motions presented at the 1st business meeting are normally not voted on until the 2nd business meeting.)
2. Another member seconds the motion.
3. The chair states the question on the motion.

#### Considering a motion:

1. The members debate the motion.
2. A member who has been given the floor by the chair may introduce an amendment to the main motion. If seconded, the amendment becomes the question under consideration until it is put to vote and resolved, after which debate returns to the original, main motion.



3. The chair restates the motion and puts the question to a vote:
  - ◇ “All in Favour of the motion please say aye.”
  - ◇ “Those opposed, please say nay.”
4. The chair announces the result of a vote (adopted or lost) .

### **Other Parliamentary Processes**

1. A motion may be delayed by referring to committee for additional work or tabled to allow for another action to happen before the motion is discussed further .
2. A vote to amend, refer to committee or table would happen before returning to vote on the initial motion.
3. The Parliamentarian will advise the President on other processes and procedures .

Adapted from: Parliamentary Procedure toward the Good Order of the University by Dr. John A. Cagle

<http://www.csufresno.edu/comm/cagle-p3.htm>



## IAMSLIC First Business Meeting— DRAFT AGENDA

Tuesday, October 22, 2013

*39th IAMSLIC Annual Conference*

1. Call to order
2. Introduction of Parliamentarian
3. Approval of the Agenda
4. Approval of Minutes from 38th Annual Meeting in Anchorage, Alaska, US
5. Annual report from the President
6. Annual report from the Treasurer
  - ◇ Approval of financial statement for the past year
  - ◇ Update from the Task-Force on Treasurer's Manual
7. Annual reports from the Committees and Taskforces
  - ◇ Aquatic Commons Board – Joan Parker
  - ◇ Bylaws Committee - Barbara Butler
  - ◇ Conference Site Selection Committee – Daria O. Carle
  - ◇ Membership Committee - Marie Pascale Baligand
  - ◇ Nominating Committee – Jennifer Walton
  - ◇ RegOnline Committee – Eleanor Uhlinger
  - ◇ Resource Sharing Committee – Jose Garnica
  - ◇ Strategic Planning Taskforce – Janet Webster
  - ◇ Website & Communications Committee – Jean Crampon
  - ◇ Archivist's update – Lisa Raymond
  - ◇ Proceedings Editor update - Dorothy Barr
8. Annual highlights from the Regional Representatives
  - ◇ AFRIAMSLIC – Arame Keita
  - ◇ Cyamus – Becky Morin
  - ◇ Euraslic – Snejina Bacheva
  - ◇ Latin America – Aida Sogaray
  - ◇ Pacific Islands – Mary-Clare Ame
  - ◇ SAIL – Joyce Shaw
9. Business from the Executive Board
  - ◇ Joint IODE/IAMSLIC GE-MIM
  - ◇ Number of candidates on IAMSLIC ballots
  - ◇ Honoring retiring long-term members
10. Other Business



## IAMS LIC Second Business Meeting— DRAFT AGENDA

Thursday, October 24, 2013  
*39th IAMS LIC Annual Conference*

1. Call to order
2. Approval of the Agenda
3. Other New Business
4. Installation of New Officers
5. Acknowledgement of 2011-2012 Officers
6. Invitation to Noumea, New Caledonia in 2014
7. Adjournment



**38<sup>th</sup> IAMSLIC Conference, 2012, Anchorage, Alaska**  
**FIRST IAMSLIC Business Meeting—DRAFT MINUTES**  
**September 27, 2012**

**Maureen Nolan, Secretary**

President Amy Butros opened at 11:00 a.m.

Beth Avery is acting as parliamentarian.

**Approval of Minutes** of the Zanzibar Meeting, October 2011 in Zanzibar, Tanzania—Motion to approve minutes, seconded, a few corrections to the minutes, vote was called. Motion was passed.

**Annual Report from the President, Amy Butros:**

1. Committee Appointments have been a challenge. We have completed our appointments for all committees.
2. Call for travel grants and projects: We had seven requests, six for travel and one project. The amount of the requests was nearly \$20,000 with a total in the Guin auction account (non-encumbered) of about \$1,000. The regional groups are leaving their funds in the central treasury for too long. It makes it unclear how much we have to use.
3. The 2011 Zanzibar conference was the first IAMSLIC conference in the Africa region, ever.
4. Less income from sponsors and higher cost of travel has been a challenge. We may need more sponsors; raise the cost of membership; other changes to bring in more income.

**Treasurer Report, Sandra Abbott-Stout**

See notes on blue pages in conference packet.

Approval of financial statement for the last year (2011-12) — Movement to approve, seconded, no further discussion, movement approved.

Further discussion on how to handle wire transfers, suggestion of using PayPal as an option. Since PayPal requires a credit card, it doesn't really solve the problem.

**Annual Reports from the Committees & Taskforces**

1. Aquatic Commons Board (Joan Parker)—Brief report. Repository



continues to grow. Printed annual report will be up on the website later today. Appears that we are getting hits from Google as often as people going directly to the Aquatic Commons. Please continue to look for content. Additional report will be on Thursday morning.

2. Conference Site Selection Committee (Daria Carle)—one proposal received for the conference in 2014 which is supposed to be held in the Pacific Islands region. Exec approved that single proposal so the 2014 IAMS LIC meeting will be in New Caledonia. The 2015 conference may be held in Rome.
3. Membership Committee (Marie Pascale Baligand)—(get charts/graphs from Annual Report) Membership has dropped from ~400 to ~300. We have nine new members, but 33 members have not renewed due to retirements, job changes, etc. Decrease is highest from USA and Europe. FAO and ODIN have supported African and South American members for the last several years. There are 32 members not affiliated with a regional group. Perhaps we need to think about putting them into one group. Reduce the workload of the database manager if we could get people to renew for three years at once.
  - a. Questions—have we explored longer renewals (e.g., 5 years) or lifetime memberships?
  - b. Comments--ASFA Trust Fund (FAO/ODIN) is supporting members worldwide, not just Africa and South America. Total of 36 of the IAMS LIC memberships are currently funded.
4. Nominating Committee (Jennifer Watson)—Thanks to everyone who agreed to run for a position this year. It's a difficult commitment with increasing workloads and much appreciated. It was discussed at a membership meeting in Zanzibar and decided that we would still like to have more than one candidate on the slate although it can be disappointing to agree to run and then not be elected. Voting is opened now for this year's election. Voting ends this Wednesday at noon. Thanks to Sandra Abbott Stout for serving four years as Treasurer.
  - a. There was discussion that we should bring the issue of a single candidate slate up again, either now, or during the Thursday meeting.

- b. Question regarding if there is only a single candidate for each office then the Nominating Committee is actually electing the officers?
  - c. Also brought up that the Conference Planning Committee should be for two years, not four. More guilt should be used to get members to serve.
  - d. Sometimes the site of the IAMSLIC meetings has an effect on whether people are able/willing to serve.
  - e. Perhaps some of this could fall under strategic planning for the organization.
5. Resource Sharing Committee (Jose Garnica)—Presented by Steve Watkins—Focus on supporting resource sharing through the Z. Capacity building in several areas was a focus. Tutorials on how to use and search the system and ILL were both updated and are in English/French/Spanish on the website. Advertising continues during ASFA board meetings and regional meetings. Membership on this committee will be in dire need of new members soon. Really good opportunity for someone to get involved in a new activity. Full report will include statistics for the year, etc.
6. Website & Communications Committee (Jean Crampon)—New chair this year. Reports from last year are up on the web. We have 403 subscribers to the listserv which is lower than the membership. We need to twist some arms to join IAMSLIC.
7. FAO-IAMSLIC Joint Activities and MOU (Janet Webster)—Our MOU is ongoing, the general structure remains the same. We can pull out different projects:
- a. Promote development and use of the Aquatic Commons.
  - b. Tools, training sessions, presentations at the conferences. Coverage of and access to of fisheries materials to developing countries.
  - c. Networking and collaboration—ASFA support, etc.
  - d. Providing metadata through ASFA.
  - e. Improving linkages through ASFA to full text.

Trying to improve our interaction with Asia, please send ideas to the

board. Janet has been the IAMS LIC rep for a long time and would love for someone else to step in, could lead to a sabbatical at FAO in Rome.

8. Strategic Planning Taskforce (Janet Webster)--Conference Planning, membership growth, etc. Will get them down and then send them out to the membership for ideas/approval.

### **Highlights from the Regional Groups**

Cyamus (Brian Voss)—Membership was down this year to 53 from 55 in 2011, but picked up two new members. Secondary affiliations are down also. We had our meeting in Alaska this year, will meet in Catalina Island in 2013. Rebecca Morin is Representative, Jeanine Scaramozzino is Secretary and Molly Engelbrecht is Treasurer. Thanks to heavy participation of Cyamus members on IAMS LIC board and committees.

AFRIAMS LIC (Amy Butros for Edna Nyika)--Membership is at 40. Thanks to IODE support and ASFA/FAO which provided funds for 19 members. The 37<sup>th</sup> conference was held in the region at Zanzibar.

EURAS LIC (Marie Pascale for Snejina Bacheva)—68 members. New board elected in May. Last conference was in Lyon, France. Next meeting in 2013 in Vilna, Bulgaria. New website. Central and Eastern European regional groups had a workshop.

Latin America (Teresa Barriga Ramirez)—42 members from 11 countries. Six sponsored by ASFA and 7 sponsored by IOC/ODINCARSA. Many members on IAMS LIC. Promotion of group during IAMS LIC. Promoting the repository, 1783 documents to Ocean Docs. Training courses on disaster planning and recovery, preservation, and grant writing. New coordinator for elections, Maria Clara Ramirez Jauregui for 2013-14.

Pacific Islands (Amy Butros for Mary-Clare Ame)—Thanks for the New Caledonia proposal. Membership at 26 members.

SAIL (Carla Robinson)—Held 22<sup>nd</sup> annual conference at New Bedford in Mass. 72 regular members and 9 retired members. Nine members on committees or involved in activities in IAMS LIC. Awarded five travel grants to IAMS LIC. Next conference in Florida in 2013.

### **Business from the Executive Board**

Nominating Committee Issue: number of candidates on the IAMS LIC

ballots

IAMSLIC Conference Site Selection Committee Issue: rotation of regions

## **New Business**

New proposal for Joint IAMSLIC-IODE Group of Experts on Marine Information Management is available on the IAMSLIC website.

Group should have 8 members, 4 long term and 4 short term (both IAMSLIC and IODE).

Global network of data centers. It has been hard for IODE to connect with marine information managers. Want to establish another Group of Experts between IAMSLIC and IODE on “Marine Information Management.”

IODE sees it as a continuation of the MOU between IOC and IAMSLIC and a chance for IAMSLIC to increase its profile within IOD.

Meeting adjourned for lunch at 12:25 pm.

## **38th IAMSLIC Conference, 2012, Anchorage, Alaska** **2nd IAMSLIC Business Meeting—DRAFT MINUTES** **September 27, 2012**

### **Maureen Nolan, Secretary**

Called to order at 11:00 a.m. – Agenda on page 32 of program.

Addition to the Agenda: New business -- IODE discussion.

New record for Guin Auction with a total of \$1,220 in bids and donations.

### **IAMSLIC election results:**

Treasurer is Lenora Oftedahl

Junior President-Elect is Guillermina Cosulich (from Argentina)

### **Conference Site Selection Committee Discussion:**

Would like the site selected before going out to recruit for officers.

Add to the guidelines—when possible avoid consecutive meetings in North America

Adding that by end of April we will know the location for the next



conference.

**IODE GE-MIM (Group of Experts in Marine Information Management) Proposal:**

Motion was proposed and seconded that the IAMS LIC executive board will appoint a task force by September 30, 2012 and complete their work by November 15, 2012. The IODE meeting is in March 2013 in Ensenada. The Executive Board will return the recommendations of the task force to the entire IAMS LIC membership for a vote. The vote must be completed by December 7, 2012. Motion was carried by a majority of members present.

Task force should also address the costs of travel for the IAMS LIC members to the meetings out of the IAMS LIC treasury.

Members would like to see the task force have more international representation.

IODE only meets every other year, but the group of experts will meet separately from this meeting schedule. Therefore, the inter-sessional period for term appointments will be one or two years, and the long term members will be for four years.

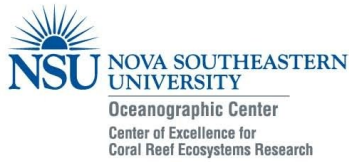
It was brought up that the task force should also address the MOU point of establishing and hosting an “ask an expert” service to assist marine librarians with expertise available within the IAMS LIC and IODE Marine Information Management communities [the MOU has already been signed and is in place until 2013 so this should be addressed at a later time].

Introduction of incoming President, Maria Kalentsits and thank you to outgoing Treasurer Sandra Abbott Stout (5 years) and President Amy Butros.

**Presentation of 2013 conference site**, Dania Beach near Ft. Lauderdale, FL in October 20-25, 2013. Nova Southeastern University Oceanographic Center at the Center of Excellence for Coral Reef Ecosystem Research.

Conference hotel is the Marriott Hollywood Beach, 4.5 miles away from the conference facility at the NSU-OC.

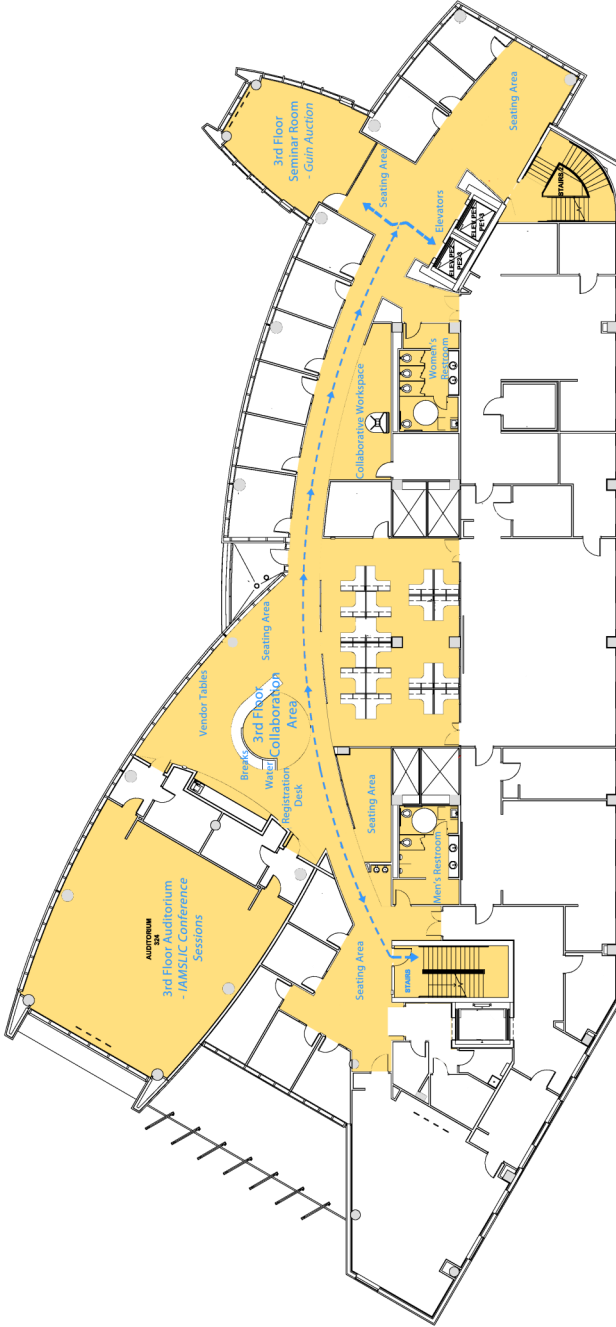
**Conference closed at noon.**



<b>5</b>	<b>5<sup>th</sup> Floor Board Room:</b> <ul style="list-style-type: none"><li>• Pre-conference Workshop</li><li>• Joint GEMIM Meeting</li></ul>
<b>4</b>	<b>4th Floor Seminar Room</b> <b>Library (Computers • Printing • Copying)</b>
<b>3</b>	<b>3<sup>rd</sup> Floor Seminar Room:</b> <ul style="list-style-type: none"><li>• Guin Auction</li></ul> <b>3<sup>rd</sup> Floor Collaboration Area:</b> <ul style="list-style-type: none"><li>• Registration Desk</li><li>• Water</li><li>• Vendor Tables</li><li>• Breaks</li></ul> <b>Auditorium:</b> <ul style="list-style-type: none"><li>• IAMSLIC Conference Sessions</li></ul>
<b>2</b>	<b>Terrace Café:</b> <ul style="list-style-type: none"><li>• Lunch</li><li>• Poster Session Viewing &amp; Break</li></ul>
<b>1</b>	<b>Main Entrance:</b> <ul style="list-style-type: none"><li>• Shuttle Pick-Up</li></ul>



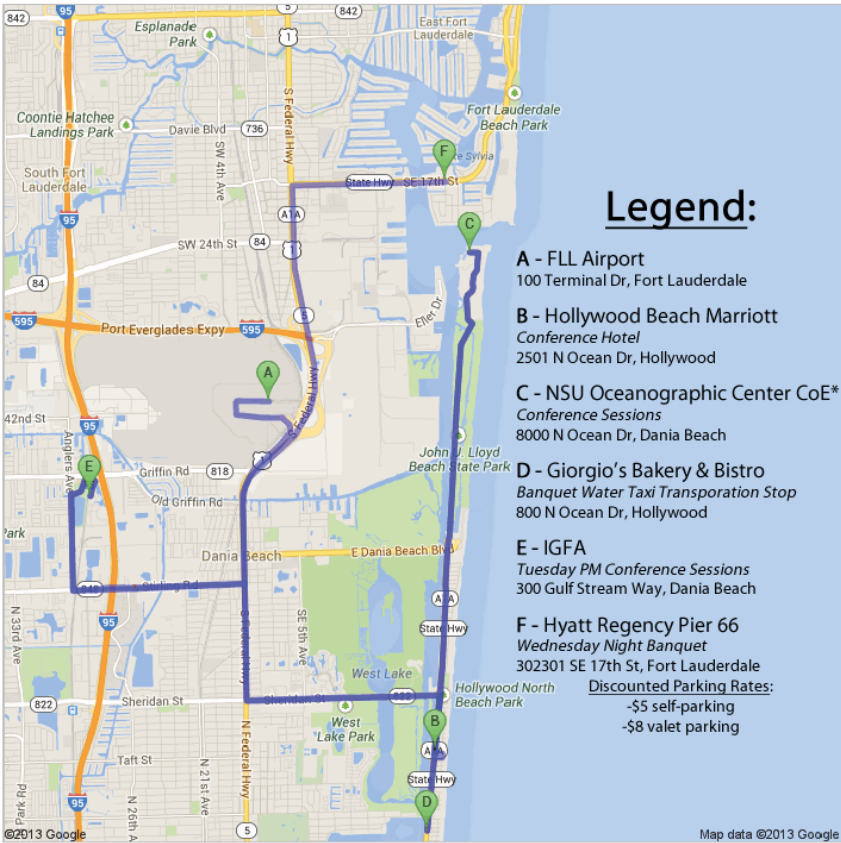
NOVA SOUTHEASTERN  
UNIVERSITY



Nova Southeastern University  
Oceanographic Center  
Center of Excellence for Coral Reef Ecosystems Research  
3rd Floor Map



# Map of Important 2013 IAMS LIC Conference Locations



\*If you are driving to the conference sessions at the NSU Oceanographic Center CoE, please tell the park attendant at the entrance of John U. Lloyd Beach State Park that you have a meeting at the NSU OC. Drive to the end of the park, and turn left at the first NSU gate, past the Coast Guard Station, and park in the large parking lot outside of the 5 story CoE building. Free park admission grants you parking at the NSU Oceanographic Center only. If you wish to park in any other area of the park during your stay, you must pay at the front gate. Please be mindful of the posted speed limits in the park as they are strictly enforced!

**For Your Health NSU is  
Tobacco-Free**